

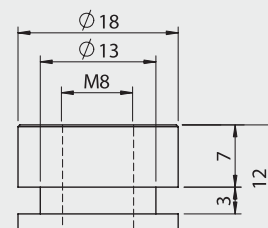
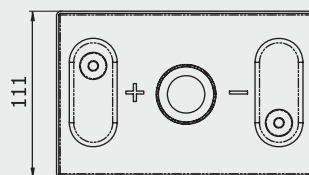
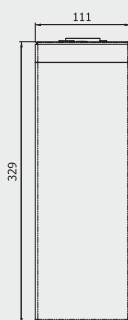
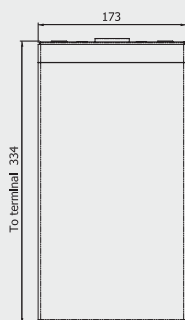


VRLA Battery **SVT 250**

Specifications	Nominal Voltage	2 V				
	Rated Capacity (20 °C)	20hr Rate (1,80V/cell)	10hr Rate (1,80V/cell)	5hr Rate (1,70V/cell)	1hr Rate (1,60V/cell)	
		276 Ah	250 Ah	231,5 Ah	173 Ah	
	Dimensions (mm) & Weight (kg)	Length	Width	Height	Overall Height	Weight
		173 mm	111 mm	329 mm	365 mm	17 kg
	Number / Type of Terminals	2 / M8				

Technical Characteristics

Design Life at 20°C	15 years
Eurobat Classification	Long Life
Internal Resistance (Fully charged - 20°C)	0,45 mΩ
Short-circuit current	2000 A
Max Charging Current	50 A
Min safe end Discharge Voltage	1,60 V/cell
Self discharge per month at 20°C	3%
Recommended Charging Voltage at 20°C	Stand-by use (V/cell): 2,25 to 2,30 Cycle use (V/cell): 2,40 to 2,50
Container Material	ABS-UL94 HB
Electrolyte Type	Sulfuric Acid
Type of plates / Alloy	Flat plates / Lead-Calcium-Tin alloy
Type of Separator	Absorbant Glass Mat
Valve Type / Operational Pressure	Rubber / 1-3 psi (70-200 mbar)
Operating Temperature Range	-20 to +50°C
Storage time at 20°C	9 months



SUNLIGHT SYSTEMS S.A.

Headquarters

23rd km. N.R. Athens-Lamia
145 65 Ag. Stefanos, Attica, Greece
Tel.: +30 210 6242000
Fax : +30 210 6216911

Manufacturing Plant

Neo Olvio
67 200 Xanthi, Greece
Tel.: +30 25410 48100
Fax : +30 25410 95446

 **SUNLIGHT**
creating energy

www.sunlight.gr